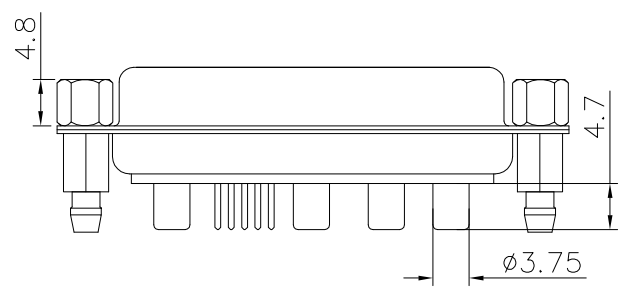
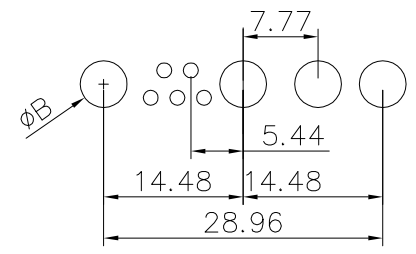


10A,20A,30A



40A



PCB layout

High power terminal:
Voltage current rating: 10~40A
Contact resistance: 2.7mΩ max.

Signal terminal:
Voltage current rating: 5A
Contact resistance: 10mΩ max.

Withstanding voltage: 1000V AC
Insulation resistance: 5000MΩ Min.
Temperature range: -55°C to +125°C
ROHS compliant

Part number:
B08-9W4811XD-X2
Terminal plated: _____
4: Au 2u"
5: Au 1u"
Current rating:
A: 10A ,Dim.A $\phi 1.7$,Dim.B $\phi 2.20$
B: 20A ,Dim.A $\phi 2.8$,Dim.B $\phi 3.30$
C: 30A ,Dim.A $\phi 3.2$,Dim.B $\phi 3.70$
D: 40A ,Dim.A $\phi 3.75$,Dim.B $\phi 4.30$

6	Nut	Steel	Plating: Ni
5	Housing	PBT+30%GF	Color: black
4	Riveted insert	Brass	Plating: Ni
3	Rear shell	SPCC	Plating: Sn
2	Front shell	SPCC	Plating: Ni
1	Terminal	Brass	Terminal finish: see part number
Item	Desc.	Material	Remark

A	△	2024/11/29	Add 40A drawing	Carl Hu
	△	2024/03/11	Change part number	Carl Hu
	△	2019/06/03	First edition release	Jack Chen
	SIDE	DATE	DESCRIPTION	APPROVER
	8	7	6	5

QUALITY SYMBOLS	Tolerance
□ : ☒ :	.x ±0.60
CRITICAL MAJOR	.x ±0.40
▽ : ▽ :	.xx ±0.25
ZERO DEFECT S.P.C	

NAME:	9W4 female vertical for PCB			PART NO.	B08-9W4811XD-X2		
REV:	D	UNIT:	mm	DRW BY	CHK BY	APP BY	DRAWING NO.
SCALE:	N:1	DATE:	2019/06/03	Huangmei	Carl Hu		B08-079
东莞市林诚塑胶电子有限公司				http://www.lineconn.com TEL: 0769-85181660 85181770			
	3	2	1				