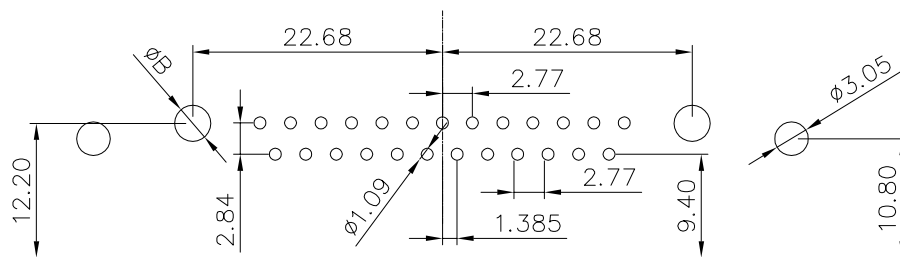
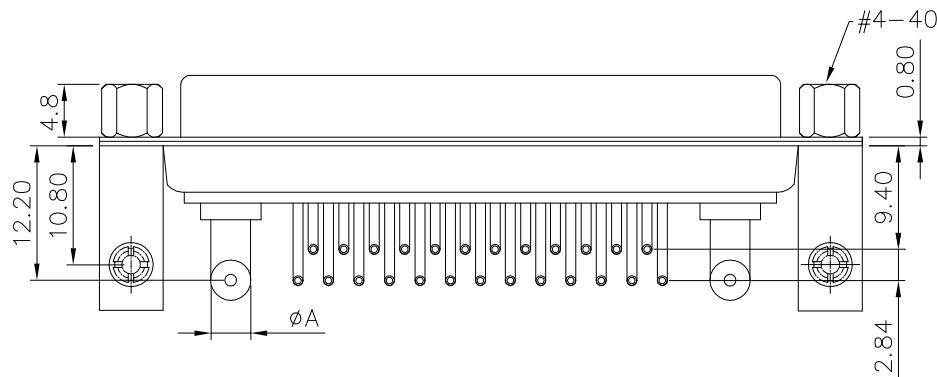


High power terminal:
Voltage current rating: 10~40A
Contact resistance: 2.7mΩ max.

Signal terminal:
Voltage current rating: 5A
Contact resistance: 10mΩ max.

Withstanding voltage: 1000V AC
Insulation resistance: 5000MΩ Min.
Temperature range: -55°C to +125°C
ROHS compliant

Part number: B08-BW2611XD-X1
Terminal plated: _____
4: Au 2u"
5: Au 1u"
Current rating: _____
A: 10A, Dim. A ϕ 1.70, Dim. B ϕ 2.20
B: 20A, Dim. A ϕ 2.80, Dim. B ϕ 3.30
C: 30A, Dim. A ϕ 3.20, Dim. B ϕ 3.70
D: 40A, Dim. A ϕ 3.70 Dim. B ϕ 4.20



PCB layout

7	Screw	Steel	Palting: Ni
6	Board lock	Copper alloy	Palting: Sn
5	Bracket	Steel	Palting: Ni
4	Housing	PBT+30%GF	Color: black
3	Rear shell	SPCC	Palting: Sn
2	Front shell	SPCC	Palting: Ni
1	Terminal	Copper alloy	Plating: see part no.
Item	Desc.	Material	Remark

A	Δ	2021/06/24	Change part number	Carl Hu	QUALITY SYMBOLS \square : \boxtimes : CRITICAL MAJOR ∇ : ∇ : ZERO DEFECT S.P.C	Tolerance .x: \pm 0.60 .x: \pm 0.40 .xx: \pm 0.25	NAME:	27W2 female right angle,riveted bracket,lock screw			PART NO.	B08-BW2611XD-X1		
	Δ	2020/01/14	Add dimension annotations	Jack Chen			REV:	C	UNIT:	mm	DRW BY	CHK BY	APP BY	DRAWING NO. B08-061
	Δ	2019/04/12	First edition release	Jack Chen			SCALE:	N:1	DATE:	2019/04/12	Yugong	Carl Hu		
	SIDE	DATE	DESCRIPTION				APPROVER	东莞市林诚塑胶电子有限公司 http://www.lineconn.com TEL:0769-85181660 85181770						