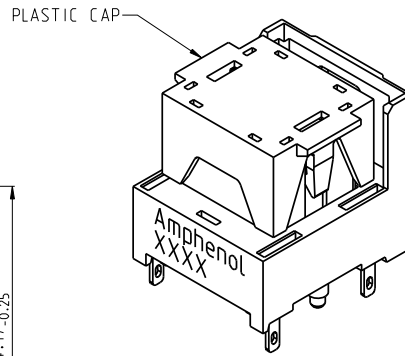


This document is the property of Amphenol Corporation and is delivered on the express condition that is not to be disclosed, reproduced or used, in whole or in part, for manufacture or sale by anyone other than Amphenol Corporation without its prior consent, and that no right is granted to disclose or to use any information in this document.

The marking on this product doesn't contain environmental hazardous materials per Material Specification SS-00259 for Sony GP compliant or per directive 2011/65/EU for RoHS compliant.

ORIGINAL

REVISIONS				
SYM	ECN No.	DESCRIPTION	DATE	BY
A	NA	RELEASE	04/03/2013	HANK HSU



PART NUMBER SYSTEM

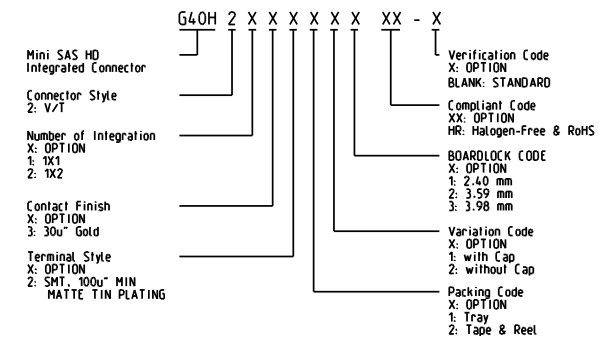
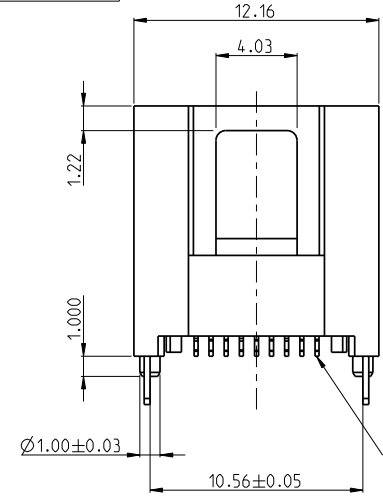
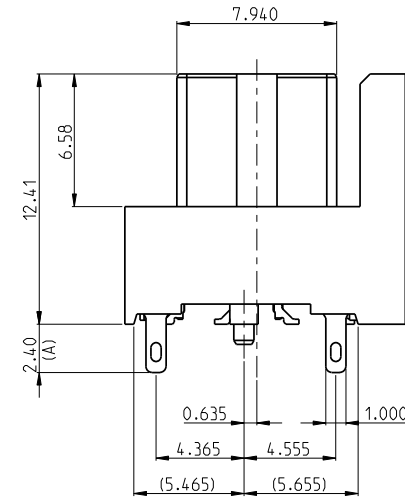
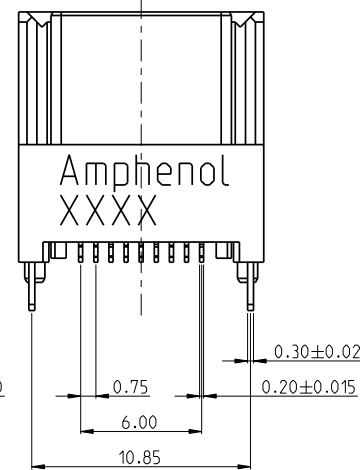
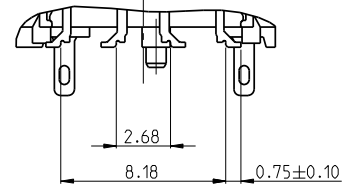
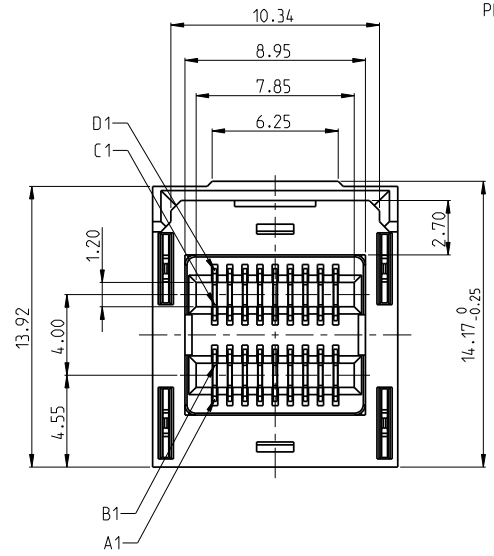


TABLE 1

DIM A	APPLICABLE PCB THK
2.40	1.57~1.60
3.59	2.36~2.79
3.98	3.18



NOTES:

- INSULATOR: HIGH TEMPERATURE THERMOPLASTIC UL94V-0. COLOR: BLACK
- TERMINAL: COPPER ALLOY  
CONTACT AREA: OPTION  
TAIL AREA: OPTION  
UNDER PLATING: NICKEL 100u" MIN.
- THIS PRODUCT DOESN'T CONTAIN ENVIRONMENTAL HAZARDOUS PER DIRECTIVE 2011/65/EUC FOR ROHS AND PER IEC 61249-2-21 FOR HALOGEN-FREE COMPLIANT.

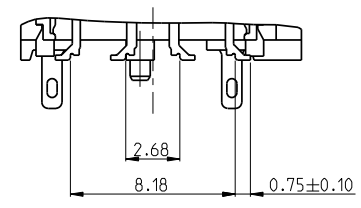
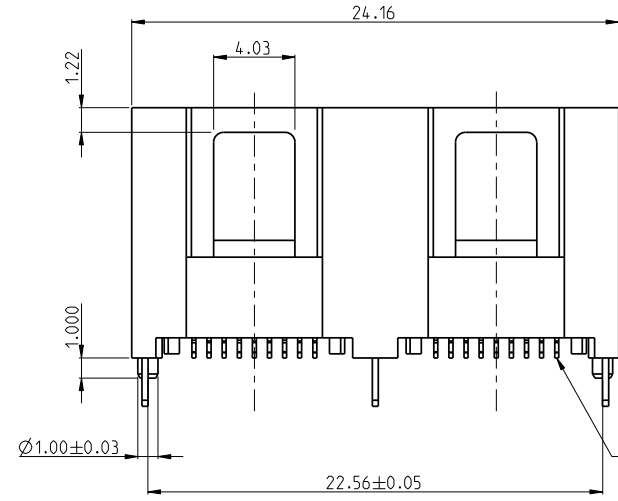
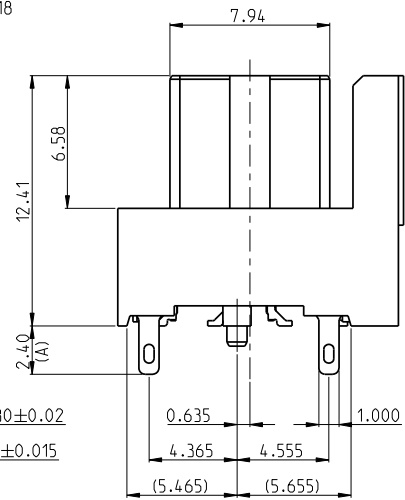
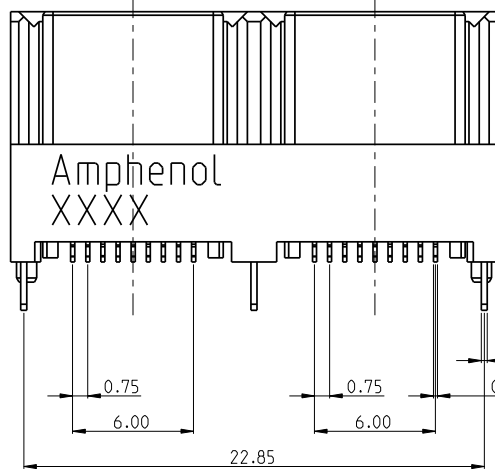
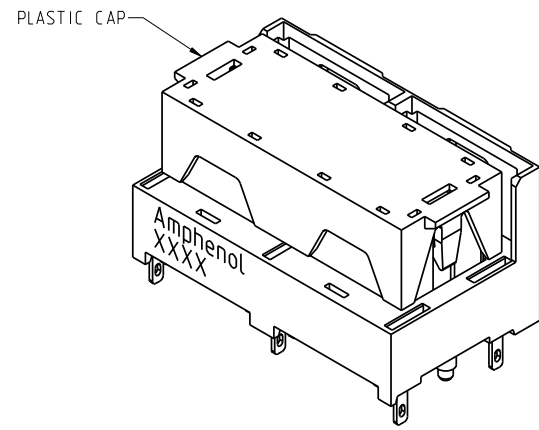
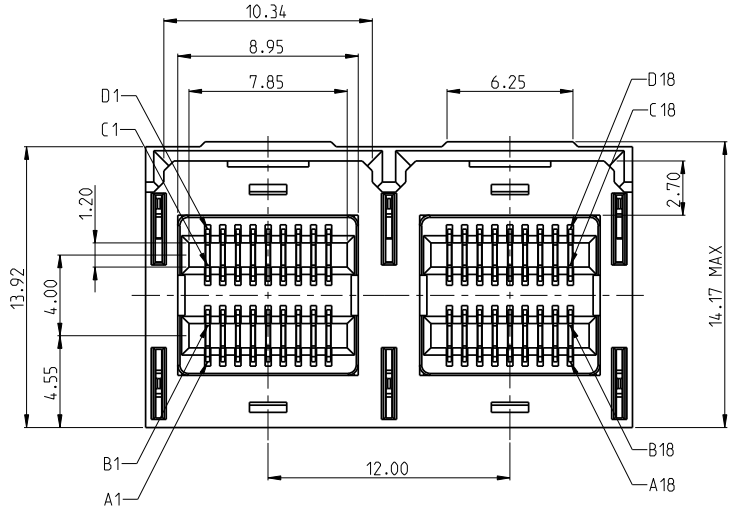
TOLERANCE	DRAWN	APPROVALS	DATE	TITLE	Amphenol® Amphenol Corporation Amphenol Taiwan Corporation					
X. X.X ±0.30 X.XX ±0.20 X.XXX ±0.10	DESIGNED	Hank Hsu	04/03/2013	MINI SAS HD INTEGRATED CONNECTOR 0.75 PITCH, V/T, SMT TYPE	UNIT	mm	SIZE	A3	PART No.	G40H2XXXXXXHR-C
ANGULAR ±2°	CHECKED	Sondra Sang	04/03/2013		SCALE	NA	SHEET	1 OF 3	DWG No.	G40H2XXXXXXHR-C
UNLESS OTHERWISE SPECIFIED	APPROVED	Hank Hsu	04/03/2013						REV.	A
	DWG TYPE	CUST DWG	PROJECT CODE	1515						

This document is the property of Amphenol Corporation and is delivered on the express condition that is not to be disclosed, reproduced or used, in whole or in part, for manufacture or sale by anyone other than Amphenol Corporation without its prior consent, and that no right is granted to disclose or to use any information in this document.

The marking on this product doesn't contain environmental hazardous materials per Material Specification SS-00259 for Sony GP compliant or per directive 2011/65/EU for RoHS compliant.

ORIGINAL

REVISIONS				
SYM	ECN No.	DESCRIPTION	DATE	BY
A	NA	RELEASE	04/03/2013	HANK HSU



0.10 ALL SMT TAILS

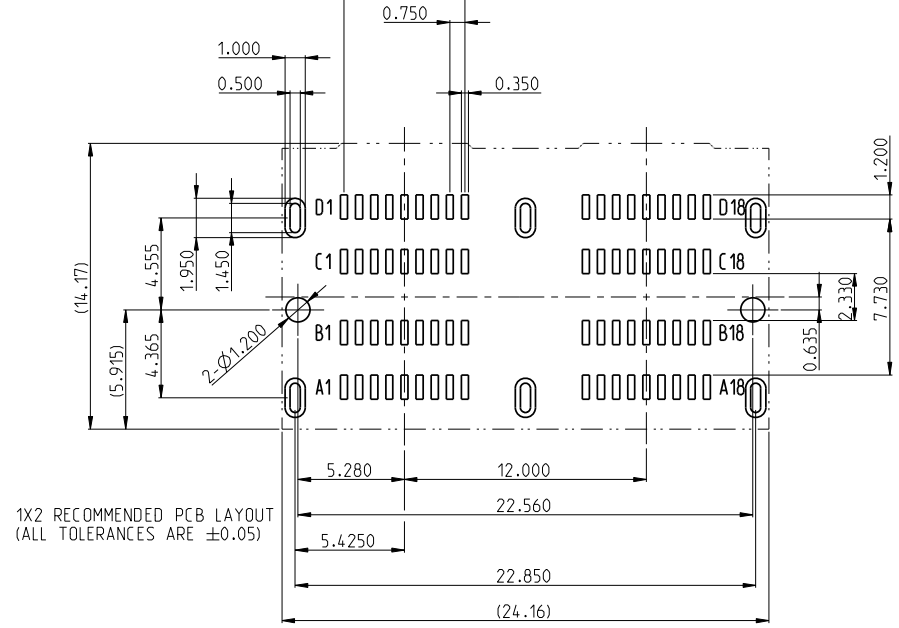
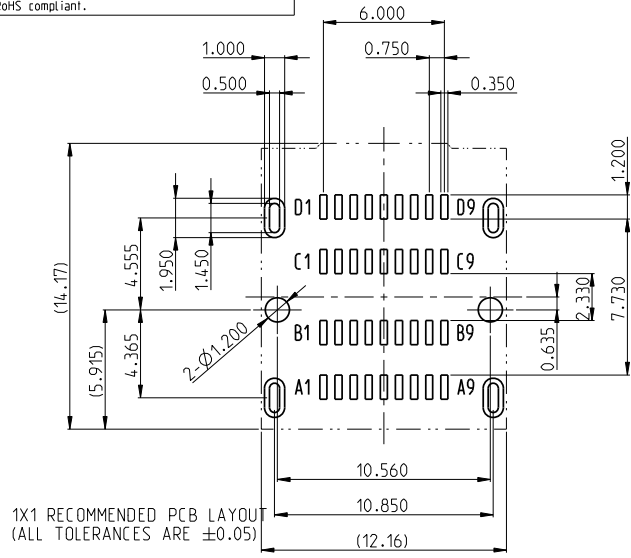
TOLERANCE	DRAWN	APPROVALS	DATE	TITLE	Amphenol® Amphenol Corporation Amphenol Taiwan Corporation					
X. X.X ±0.30 X.XX ±0.20 X.XXX ±0.10	DESIGNED	Hank Hsu	04/03/2013	MINI SAS HD INTEGRATED CONNECTOR 0.75 PITCH, V/T, SMT TYPE	UNIT	mm	SIZE	A3	PART No.	G40H2XXXXXXHR-C
ANGULAR ±2°	CHECKED	Sondra Sang	04/03/2013		SCALE	NA	SHEET	2 OF 3	DWG No.	G40H2XXXXXXHR-C
UNLESS OTHERWISE SPECIFIED	DWG TYPE	CUST DWG	PROJECT CODE	1515					REV.	A

This document is the property of Amphenol Corporation and is delivered on the express condition that it is not to be disclosed, reproduced or used, in whole or in part, for manufacture or sale by anyone other than Amphenol Corporation without its prior consent, and that no right is granted to disclose or to use any information in this document.

The marking on this product doesn't contain environmental hazardous materials per Material Specification SS-00259 for Sony GP compliant or per directive 2011/65/EU for RoHS compliant.

**ORIGINAL**

REVISIONS				
SYM	ECN No.	DESCRIPTION	DATE	BY
A	NA	RELEASE	04/03/2013	HANK HSU



PIN ASSIGNMENT (SAS-2.1)(T10/2125-D Revision 05, 14 July 2010)

D1	D2	D3	D4	D5	D6	D7	D8	D9
SB5	SB6	GND	Tx0+	Tx0-	GND	Tx2+	Tx2-	GND
SB4	SB2	GND	Tx1+	Tx1-	GND	Tx3+	Tx3-	GND
C1	C2	C3	C4	C5	C6	C7	C8	C9
B1	B2	B3	B4	B5	B6	B7	B8	B9
SB3	SB1	GND	Rx0+	Rx0-	GND	Rx2+	Rx2-	GND
SB7	SB0	GND	Rx1+	Rx1-	GND	Rx3+	Rx3-	GND
A1	A2	A3	A4	A5	A6	A7	A8	A9

D10	D11	D12	D13	D14	D15	D16	D17	D18
SB13	SB14	GND	Tx4+	Tx4-	GND	Tx6+	Tx6-	GND
SB12	SB10	GND	Tx5+	Tx5-	GND	Tx7+	Tx7-	GND
C10	C11	C12	C13	C14	C15	C16	C17	C18
B10	B11	B12	B13	B14	B15	B16	B17	B18
SB11	SB9	GND	Rx4+	Rx4-	GND	Rx6+	Rx6-	GND
SB15	SB8	GND	Rx5+	Rx5-	GND	Rx7+	Rx7-	GND
A10	A11	A12	A13	A14	A15	A16	A17	A18



- NOTES:
1. RECOMMENDED PCB HOLE Ø1.20 IS NPTH FOR ORIENTATION POST.
  2. RECOMMENDED PCB ELLIPTICAL HOLE 0.5X1.45 IS PTH FOR BOARD-LOCK.
  3. MINIMUM PCB THICKNESS: 1.57MM

TOLERANCE	DRAWN	APPROVALS	DATE	TITLE						
X.	DESIGNED	Hank Hsu	04/03/2013	MINI SAS HD INTEGRATED CONNECTOR 0.75 PITCH, V/T, SMT TYPE	 <b>Amphenol Corporation</b> <b>Amphenol Taiwan Corporation</b>					
X.X ±0.30	CHECKED	Sondra Sang	04/03/2013							
X.XX ±0.20	APPROVED	Hank Hsu	04/03/2013							
X.XXX ±0.10	DWG TYPE	CUST DWG	PROJECT CODE	1515	UNIT	mm	SIZE	A3	PART No.	G40H2XXXXXXHR-C
ANGULAR ±2°	UNLESS OTHERWISE SPECIFIED				SCALE	NA	SHEET	3 OF 3	DWG No.	G40H2XXXXXXHR-C
									REV.	A