

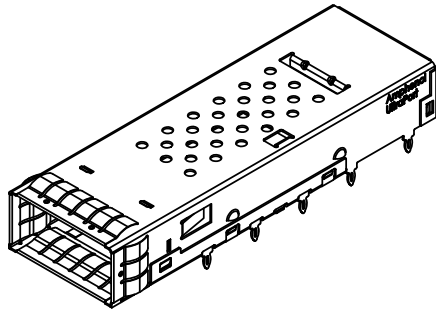
AMPHENOL PART NUMBER CONFIGURATION
 U95 - T1 0 1 -1 X X X

REVISIONS			
REV	DESCRIPTION, ECN, EAR NO.	DATE	APP'D
A	INITIAL RELEASE	MAR 2/15	AC
B	PCB FRONT EDGE NOTE ADDED	APR 22/15	AC
C	COMPLIANT PIN LEAD IN TIP SHORTENED FOR THINNER B2B PCB APPLICATION	JUL 10/15	AC

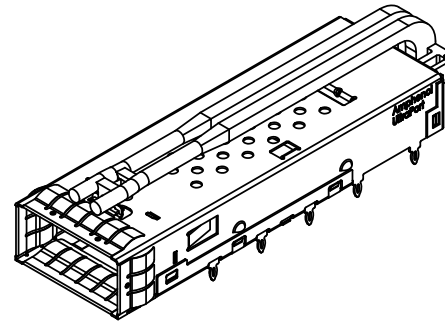
OPTIONAL DUST COVER (CONDUCTIVE)
 0 = WITHOUT DUST COVER
 D = WITH DUST COVER (SHIPPED LOOSE PIECE)

PACKAGING OPTION
 1 = TRAY PACKAGING (LIGHT PIPE AND/OR HEAT SINK SHIPPED LOOSE IF ORDERED)
 A = TRAY PACKAGING (LIGHT PIPE AND/OR HEAT SINK ASSEMBLED TO THE CAGE)

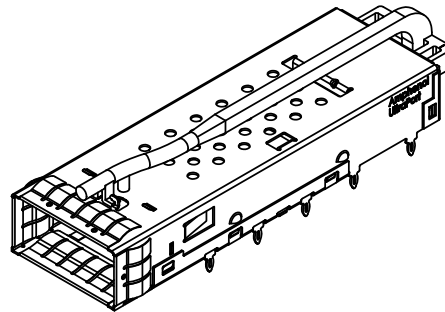
OPTIONAL LIGHT PIPE
 0 = NO LIGHT PIPE
 1 = DUAL BARREL LIGHT PIPE - ROUND OUTLET
 7 = SINGLE BARREL LIGHT PIPE - ROUND OUTLET
 4 = QUAD BARREL LIGHT PIPE - ROUND OUTLET



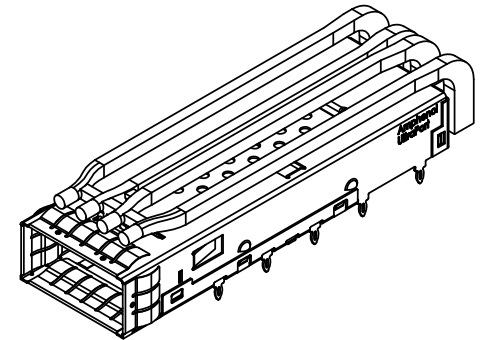
VIEW WITH NO LIGHT PIPE AND ROUND PIN HEAT SINK (NO DUST COVER)
 (P/N U95-T101-1001)



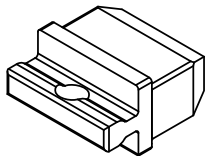
VIEW WITH DUAL BARREL LIGHT PIPE AND ROUND PIN HEAT SINK (NO DUST COVER)
 (P/N U95-T101-101A)



VIEW WITH SINGLE BARREL LIGHT PIPE AND ROUND PIN HEAT SINK (NO DUST COVER)
 (P/N U95-T101-107A)



VIEW WITH QUAD BARREL LIGHT PIPE AND ROUND PIN HEAT SINK (NO DUST COVER)
 (P/N U95-T101-104A)



CONDUCTIVE DUST COVER SHOWN (OPTIONAL)
 P/N U79-111-9000-P (SHIPPED LOOSE)

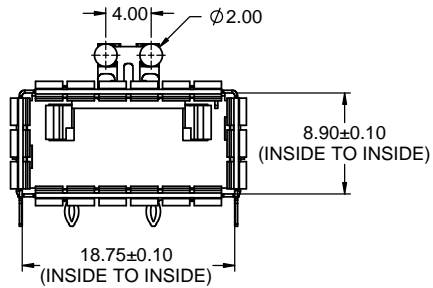


UNLESS SPECIFIED OTHERWISE	DRAWN	J.Z.	MAR 2/15
UNIT	MILLIMETERS	CHECKED	A.C.
REFERENCE IN PARENTHESES	M.E. APP'D	Q.A. APP'D	
GENERAL TOLERANCES	DWG APP'D	ENG. REL. NO.	-
1 DECIMAL PLACE	±0.2	REF.	
2 DECIMAL PLACES	±0.15	THIRD ANGLE PROJECTION	
ANGULAR DEGREES	±1°	DO NOT SCALE DRAWING	

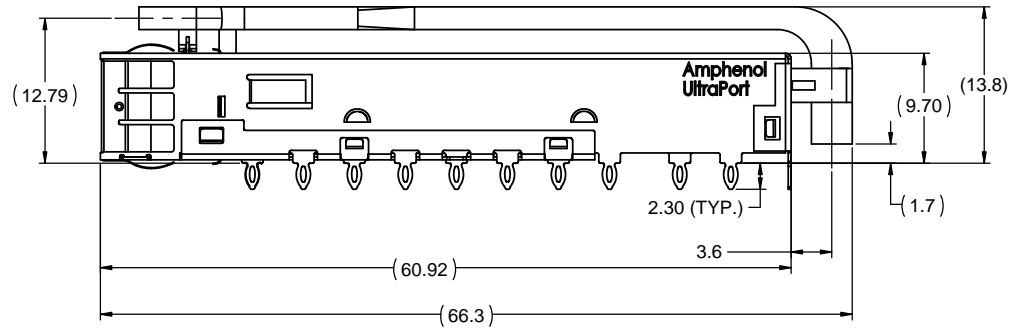
Amphenol High Speed Interconnects
 A Division of Amphenol Corp. www.amphenol-highspeed.com

UltraPort QSFP 1X1 CAGE ASSEMBLY THRU BEZEL TWO REAR PINS WITH TOP VENT HOLES AND LIGHT PIPE OPTIONS

DWG. NO.	P-U95-T101-1XXX	REV	C
CODE ID NO.	03554	DWG SIZE:	C
SCALE:	3:1	SHEET	1 OF 5



VIEW WITH DUAL BARREL LIGHT PIPE
(NO DUST COVER)
(P/N U95-T101-101A)



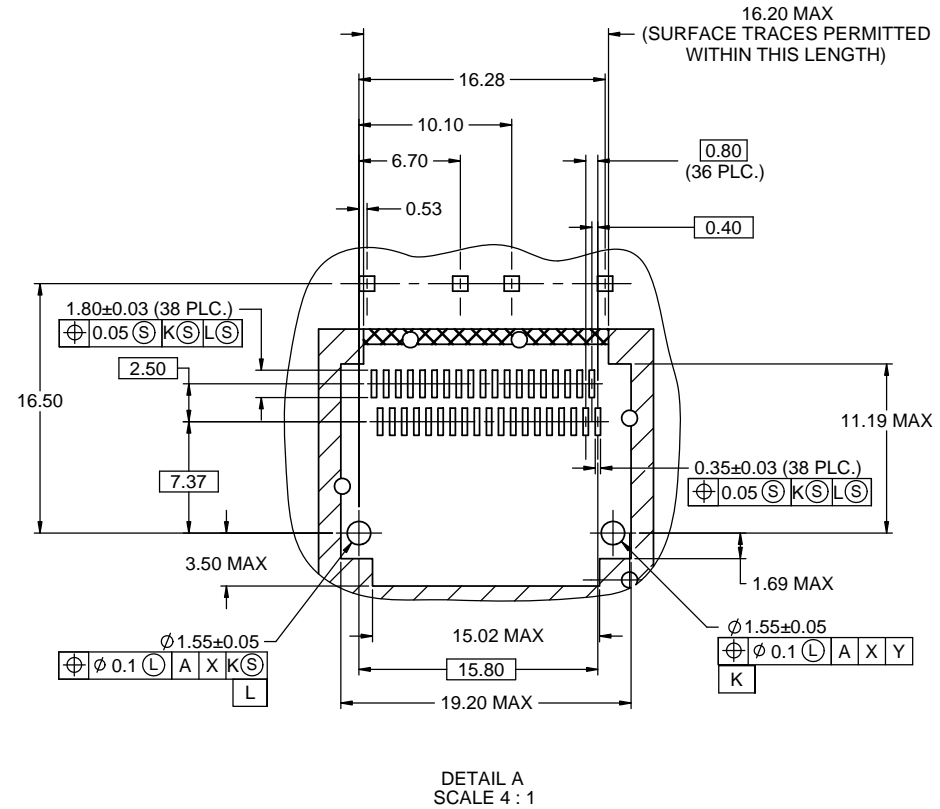
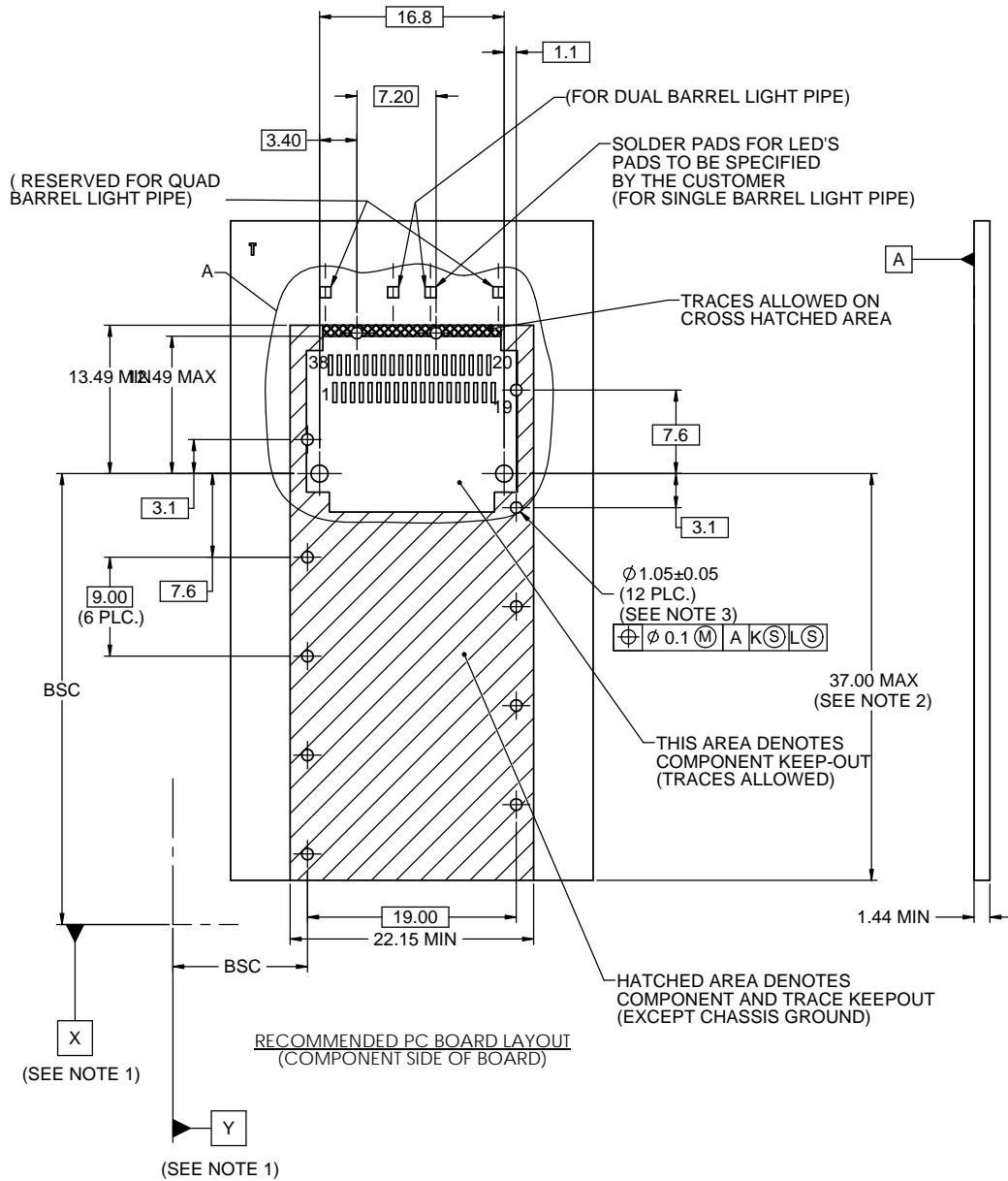
VIEW WITH DUAL BARREL LIGHT PIPE
(NO DUST COVER)
(P/N U95-T101-101A)

NOTES:

- MATERIAL:
CAGE AND EMI SPRINGS: COPPER ALLOY
CAGE PLATING: 2.54µm [100µ"] MIN. NICKEL.
LIGHT PIPE: GE LEXAN RESIN, CLEAR OPTICAL GRADE
DUST COVER: CONDUCTIVE RUBBER
- DUST COVER IS SHIPPED AS A LOOSE PIECE IF ORDERED.

UNLESS SPECIFIED OTHERWISE	DRAWN	J.Z.	MAR 2/15
UNIT	CHECKED	A.C.	MAR 2/15
REFERENCE IN PARENTHESES	M.E. APP'D		
	Q.A. APP'D		
GENERAL TOLERANCES	DWG APP'D		
1 DECIMAL PLACE	ENG. REL. NO.	-	
2 DECIMAL PLACES	REF.		
ANGULAR DEGREES	THIRD ANGLE PROJECTION		
	DO NOT SCALE DRAWING		

Amphenol High Speed Interconnects A Division of Amphenol Corp. www.amphenol-highspeed.com			
UltraPort QSFP 1X1 CAGE ASSEMBLY THRU BEZEL TWO REAR PINS WITH TOP VENT HOLES AND LIGHT PIPE OPTIONS			
DWG. NO.	P-U95-T101-1XXX		REV C
CODE ID NO.	03554	DWG SIZE: C	SCALE: 3:1 SHEET 2 OF 5



- NOTES:
- DATUMS X AND Y ESTABLISHED BY CUSTOMER'S FIDUCIAL.
 - LOCATION OF EDGE OF PCB IS APPLICATION SPECIFIC.
 - FINISHED HOLE SIZE.

THIS DOCUMENT CONTAINS PROPRIETARY INFORMATION AND SUCH INFORMATION MAY NOT BE DISCLOSED TO OTHERS FOR ANY PURPOSE OR USED FOR MANUFACTURING PURPOSES WITHOUT WRITTEN PERMISSION FROM AMPHENOL CANADA CORP.

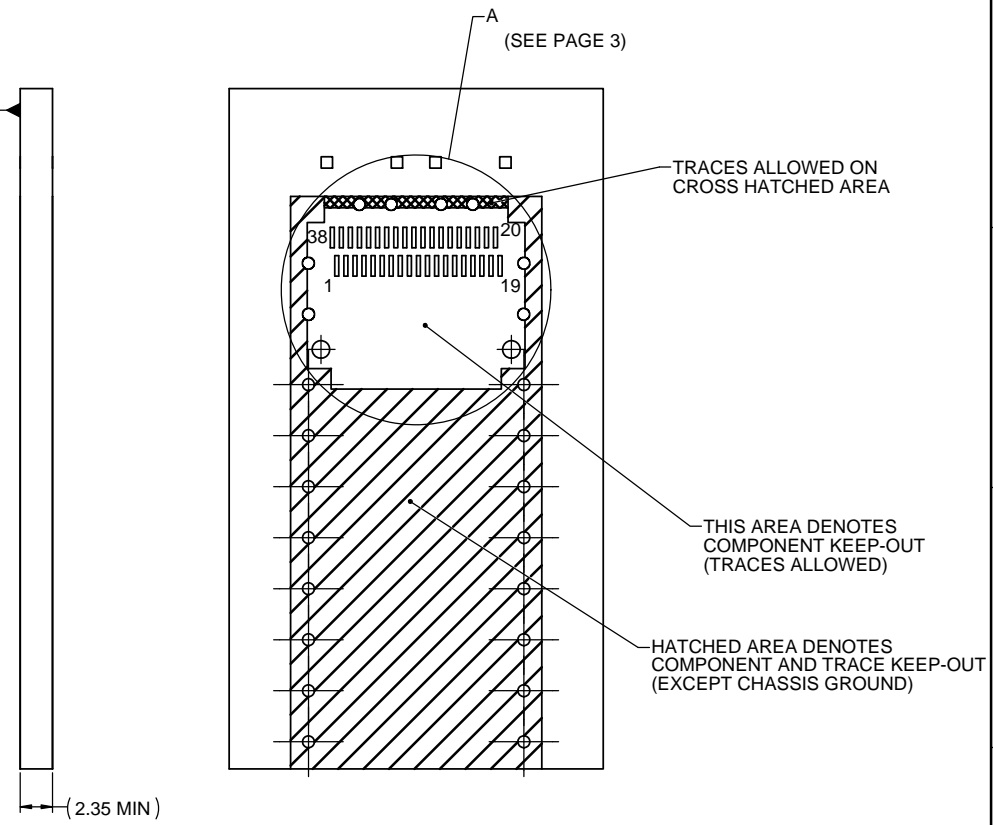
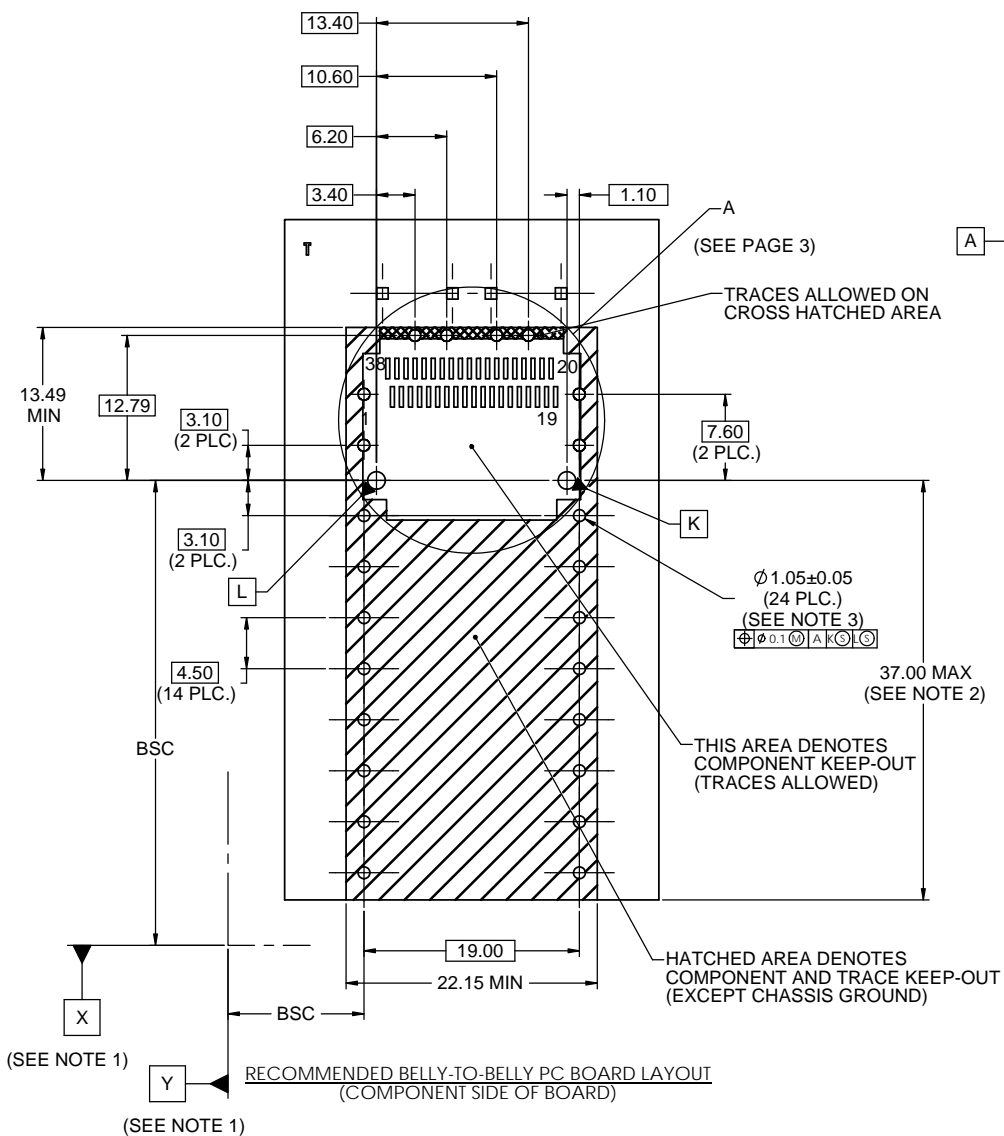
UNLESS SPECIFIED OTHERWISE	DRAWN	J.Z.	MAR 2/15
UNIT	MILLIMETERS	CHECKED	A.C.
REFERENCE IN PARENTHESES	M.E. APPD	Q.A. APPD	
GENERAL TOLERANCES	DWG APPD	ENG. REL. NO.	-
1 DECIMAL PLACE	±0.2	REF.	
2 DECIMAL PLACES	±0.15	THIRD ANGLE PROJECTION	
ANGULAR DEGREES	±1°	DO NOT SCALE DRAWING	

Amphenol High Speed Interconnects
 A Division of Amphenol Corp. www.amphenol-highspeed.com

UltraPort QSFP 1X1 CAGE ASSEMBLY THRU BEZEL TWO REAR PINS WITH TOP VENT HOLES AND LIGHT PIPE OPTIONS

DWG. NO. **P-U95-T101-1XXX** REV **C**

CODE ID NO. 03554 DWG SIZE: C SCALE: 3:1 SHEET 3 OF 5



- NOTES:
- DATUMS X AND Y ESTABLISHED BY CUSTOMER'S FIDUCIAL.
 - LOCATION OF EDGE OF PCB IS APPLICATION SPECIFIC.
 - FINISHED HOLE SIZE.

RECOMMENDED BELLY-TO-BELLY PC BOARD LAYOUT
(COMPONENT SIDE OF BOARD)

THIS DOCUMENT CONTAINS PROPRIETARY INFORMATION AND SUCH INFORMATION MAY NOT BE DISCLOSED TO OTHERS FOR ANY PURPOSE OR USED FOR MANUFACTURING PURPOSES WITHOUT WRITTEN PERMISSION FROM AMPHENOL CANADA CORP.

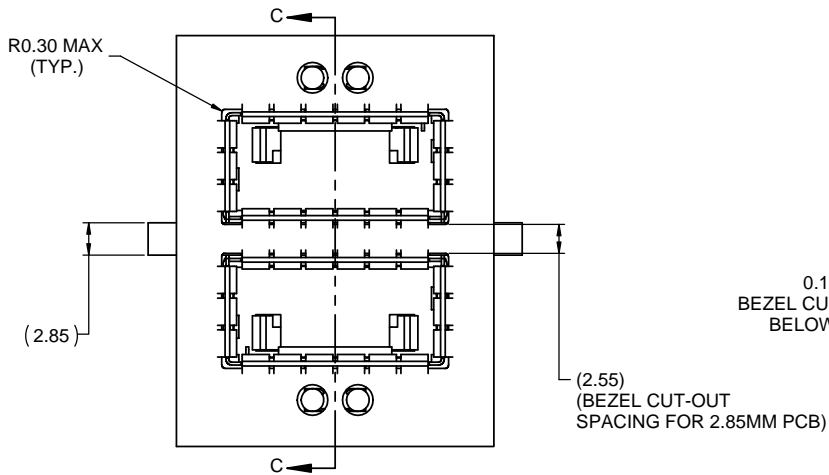
UNLESS SPECIFIED OTHERWISE		DRAWN	J.Z.	MAR 2/15
UNIT	MILLIMETERS	CHECKED	A.C.	MAR 2/15
REFERENCE IN PARENTHESES		M.E. APP'D		
GENERAL TOLERANCES		Q.A. APP'D		
1 DECIMAL PLACE	±0.2	DWG APP'D		
2 DECIMAL PLACES	±0.15	ENG. REL. NO.	-	
ANGULAR DEGREES	±1°	REF.		
		THIRD ANGLE PROJECTION		
		DO NOT SCALE DRAWING		

Amphenol High Speed Interconnects
A Division of Amphenol Corp. www.amphenol-highspeed.com

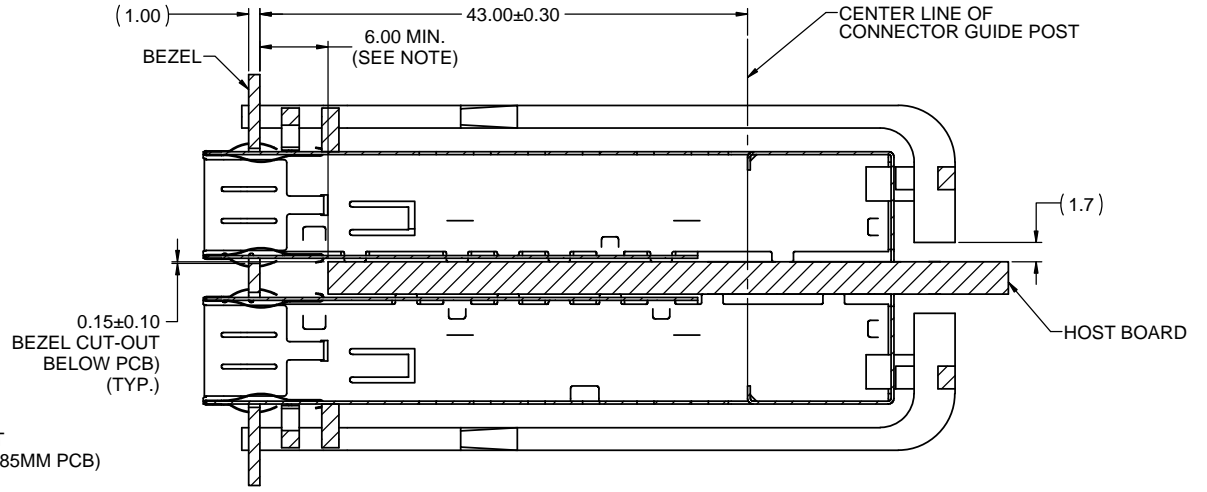
UltraPort QSFP 1X1 CAGE ASSEMBLY THRU BEZEL TWO REAR PINS WITH TOP VENT HOLES AND LIGHT PIPE OPTIONS

DWG. NO. **P-U95-T101-1XXX** REV **C**

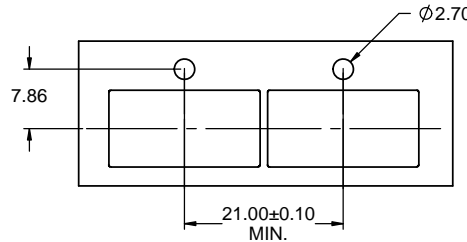
CODE ID NO. 03554 | DWG SIZE: C | SCALE: 3:1 | SHEET 4 OF 5



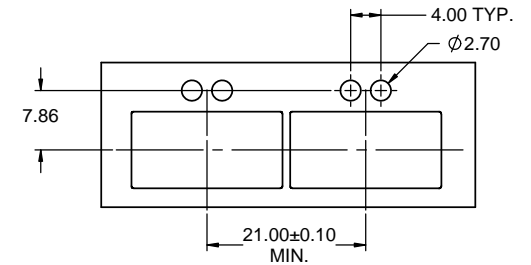
RECOMMENDED BELLY-TO-BELLY MOUNTING DESIGN



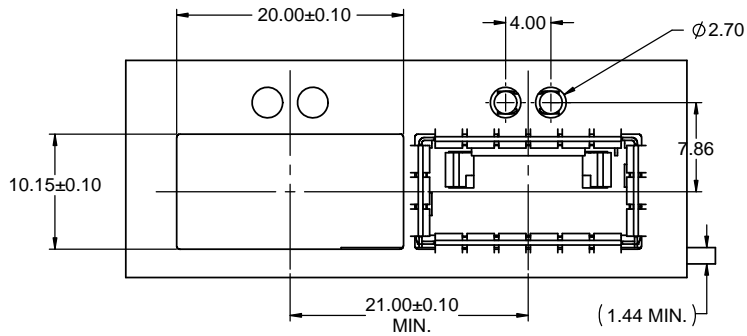
SECTION C-C



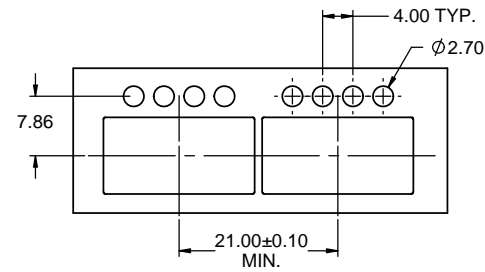
RECOMMENDED SINGLE SIDED MOUNTING DESIGN FOR SINGLE LIGHT PIPE



RECOMMENDED SINGLE SIDED MOUNTING DESIGN FOR DUAL LIGHT PIPE



RECOMMENDED SINGLE SIDED MOUNTING DESIGN FOR DUAL LIGHT PIPE



RECOMMENDED SINGLE SIDED MOUNTING DESIGN FOR QUAD LIGHT PIPE

NOTES:
LOCATION OF EDGE OF PCB IS APPLICATION SPECIFIC.

THIS DOCUMENT CONTAINS PROPRIETARY INFORMATION AND SUCH INFORMATION MAY NOT BE DISCLOSED TO OTHERS FOR ANY PURPOSE OR USED FOR MANUFACTURING PURPOSES WITHOUT WRITTEN PERMISSION FROM AMPHENOL CANADA CORP.

UNLESS SPECIFIED OTHERWISE	DRAWN	J.Z.	MAR 2/15
UNIT	MILLIMETERS	CHECKED	A.C.
REFERENCE IN PARENTHESES	M.E. APP'D	Q.A. APP'D	
GENERAL TOLERANCES	DWG APP'D	ENG. REL. NO.	-
1 DECIMAL PLACE	±0.2	REF.	
2 DECIMAL PLACES	±0.15	THIRD ANGLE PROJECTION	
ANGULAR DEGREES	±1°	DO NOT SCALE DRAWING	

Amphenol High Speed Interconnects
A Division of Amphenol Corp. www.amphenol-highspeed.com

UltraPort QSFP 1X1 CAGE ASSEMBLY THRU BEZEL TWO REAR PINS WITH TOP VENT HOLES AND LIGHT PIPE OPTIONS

DWG. NO.	P-U95-T101-1XXX	REV	C
CODE ID NO.	03554	DWG SIZE:	C
SCALE:	3:1	SHEET	5 OF 5