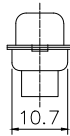
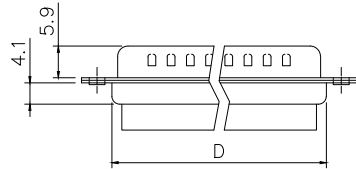
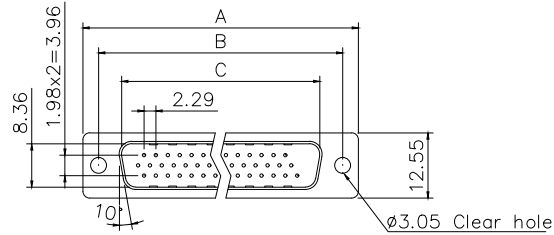


**RoHS COMPLIANT**

Positions	A	B	C	D
15	30.81	24.99	16.92	19.2
26	39.20	33.30	25.25	27.7
44	53.05	47.04	38.96	41.1
62	69.40	63.50	55.42	57.3



15,26,44,62 Positions

Voltage Current Rating:5 AMP.  
Dielectric Withstanding Voltage:1000V AC  
Insulation Resistance:1000MΩ Min.  
Temperature Range:-25°C to +85°C

PART NO:

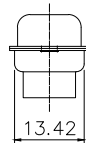
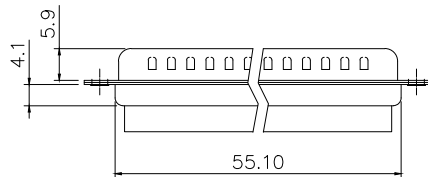
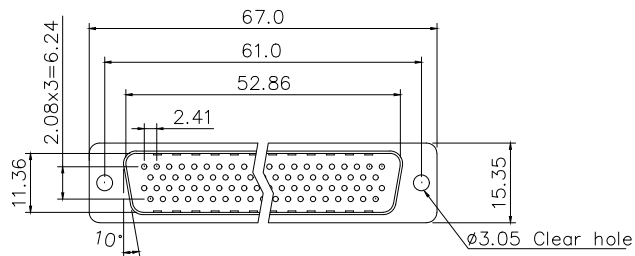
B04-0XX1X100-02

NO.OF CONTACT:

- 15 = 15 pos
- 26 = 26 pos
- 44 = 44 pos
- 62 = 62 pos
- 78 = 78 pos

HOUSING COLOR:

- 1 = BLACK
- 5 = WHITE
- 6 = BLUE



78 Positions

ITEM	DESC.	MATERIAL	REMARKS	PART REMARKS
3	REAR SHELL	SPCC	PALTING: Sn	
2	FRONT SHELL	SPCC	PALTING: Ni	
1	HOUSING	PBT+30%GF	COLOR: SEE PART NO.	

QUALITY SYMBOLS

- : CRITICAL
- ☒: MAJOR
- ▽: ZERO DEFECT
- ▽: S.P.C

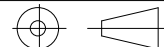
Tolerance

- .x ±0.50
- .x ±0.30
- .xx ±0.25

NAME: HD.D-SUB CRIMP 传统公头 (客户用图) PART NO. B04-0XX1X100-02

REV: A UNIT: mm DRW BY: JINGLI CHK BY: KING ZHOU APP BY: DRAWING NO. B04-033

SCALE: N:1 DATE: 2016/07/22 JINGLI KING ZHOU



lineconn 东莞市林诚塑胶电子有限公司 http://www.lineconn.com  
TEL:0769-85181660 85181770

SIDE	DATE	DESCRIPTION	APPROVER
△	2016/07/22	NEW ISSUE	JINGLI