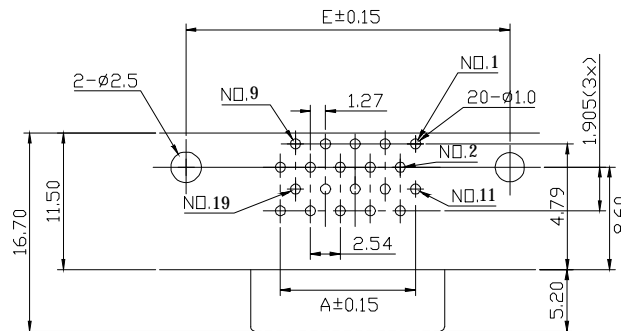
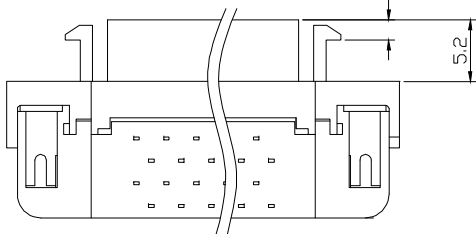
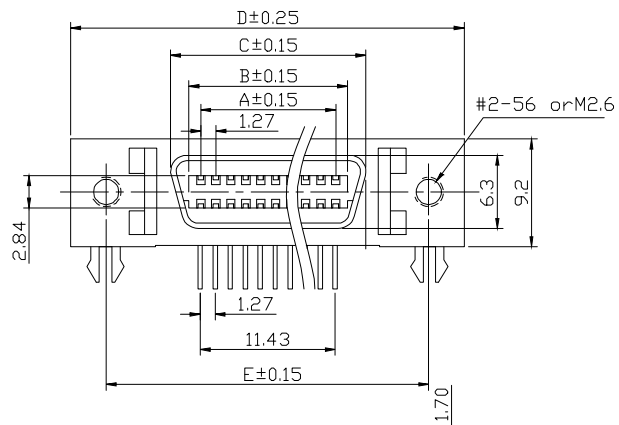
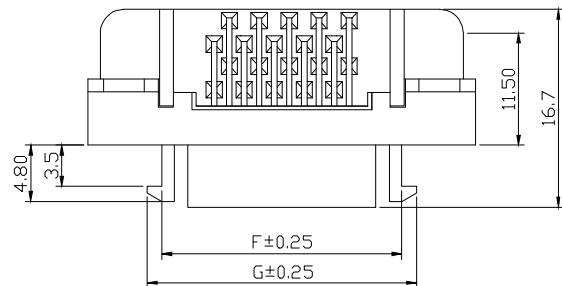


RoHS COMPLIANT



PCB LAYOUT

NO. OF PIN	DIMENSIONS						
	A	B	C	D	E	F	G
20	11.43	13.1	16.43	33.32	27.45	21.06	23.39
36	21.59	23.4	26.5	43.48	37.61	31.11	33.55

Voltage Current Rating: 1 AMP. 30V AC
 Dielectric Withstanding Voltage: 500V AC
 Contact Resistance: 35 mΩ Max.
 Insulation Resistance: 500MΩ Min.
 Temperature Range: -20°C to +85°C

PART NO.: B03-0XX618A7-02
 NO. OF PIN: 20: 20P
 36: 36P

ITEM	DESC.	MATERIAL	REMARKS	PART REMARKS
5	BRACKET	STEEL	PLATING: Ni	
4	COVER	PBT+30%GF	COLOR: BLACK	
3	HOUSING	PBT+30%GF	COLOR: BLACK	
2	SHELL	ZINC ALLOY	PLATING: Ni	
1	TERMINAL	COPPER ALLOY	CONTACT AREA: G/F SOLDER AREA: Sn UNDER-PLATING: Ni	

△			
△			
△	2018/11/09 新版发行	King Zhou	
SIDE	DATE	DESCRIPTION	APPROVER

QUALITY SYMBOLS	Tolerance
□: MAJOR	.x ±0.80
▽: S.P.C	.x ±0.50
ZERO DEFECT	.xx ±0.25

NAME:	SCSI FEMALE 90度DIP 锌合金壳 TYPE II (客户用图)			PART NO.	B03-0XX618A7-02		
REV:	A	UNIT:	mm	DRW BY	CHK BY	APP BY	DRAWING NO.
SCALE:	N:1	DATE:	2018/11/09	DAWN HU	KING ZHOU		B03-085

Lineconn 东莞市林诚塑胶电子有限公司 <http://www.lineconn.com>
 TEL: 0769-85181660 85181770