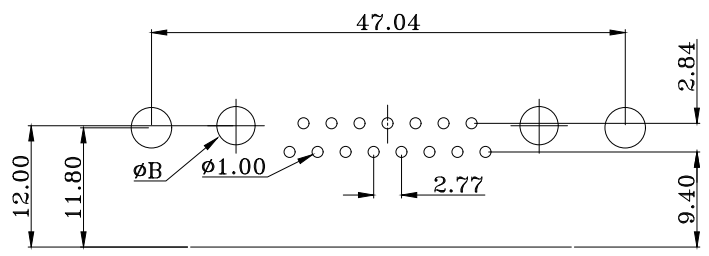
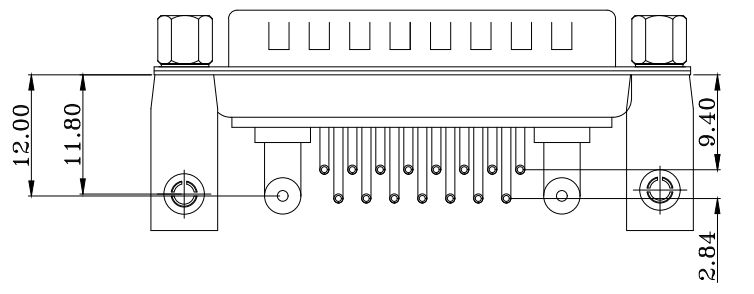


High Power Contact Current Rating:
10,20 or 40AMPS
High Power Contact Resistance:
2.7 Milliohms Max.
Dielectric Withstanding Voltage:
1000V AC For 1 Minute
Insulation Resistance:5000MΩ Min.
Temperature Range:-25°C to +85°C

PART NO:
B08-AW25X14D-X1

HOUSING COLOR:
1:BLACK
3:GREEN
5:WHITE

CURRENT RATING:
A = 10 AMPS Dim.A ϕ 1.7 Dim.B ϕ 2.2
B = 20 AMPS Dim.A ϕ 2.8 Dim.B ϕ 3.3
C = 30 AMPS Dim.A ϕ 3.2 Dim.B ϕ 3.7
D = 40 AMPS Dim.A ϕ 3.7 Dim.B ϕ 4.2



PCB LAYOUT

6	JACKSCREWS	BRASS	PLATING:Ni	
5	HOUSING	PBT+30%GF	COLOR: WHITE	
4	RIVETED INSERT	BRASS	PLATING:Ni	
3	REAR SHELL	SPCC	PLATING:Sn	
2	FRONT SHELL	SPCC	PLATING:Ni	
1	TERMINAL	BRASS	TERMINAL FINISH:FULL GOLD FINISHED 2u"	
ITEM	DESC.	MATERIAL	REMAKS	PART REMAKS

				QUALITY SYMBOLS	Tolerance	NAME:	17W2 90度公头柳支架鱼叉锁螺丝 POWER D-SUB (客户用图)				PART NO.	B08-AW25114D-X1	
				<input type="checkbox"/> : <input checked="" type="checkbox"/> :	x. \pm 0.50	REV:	A	UNIT:	mm	DRW BY	CHK BY	APP BY	DRAWING NO.
				CRITICAL MAJOR	.x \pm 0.30	SCALE:	N:1	DATE:	2017/05/13	JINGLI	KING ZHOU		B08-047
				<input checked="" type="checkbox"/> : <input type="checkbox"/> :	.xx \pm 0.25								
				ZERO DEFECTS.P.C		东莞市林诚塑胶电子有限公司				http://www.lineconn.com TEL:0769-85181660 85181770			
SIDE	DATE	DESCRIPTION	APPROVER										
8	2017/05/13	NEW ISSUE	JINGLI										